

De Niro's Nobu plans luxury condo complex in downtown Toronto

thestar.com/news/gta/2017/03/08/nobu-plans-luxury-condo-complex-in-downtown-toronto.html

3/7/2017



Nobu's development at 15 Mercer St. will have condos, a hotel and a restaurant. (Jesse Winter / Toronto Star) | [Order this photo](#)

By [Jesse Winter](#) Staff Reporter

Wed., March 8, 2017

If you want to be king for a night in Toronto, Robert De Niro could soon make you an offer you can't refuse.

Nobu Hospitality, the luxury restaurant and hotel chain De Niro founded with famed Japanese chef Nobu Matsuhisa and Hollywood producer Meir Teper, is planning Canada's first Nobu-branded condo, restaurant and hotel development on Mercer St. in Toronto's entertainment district.

Two 49-storey towers will be built above the current Pilkington Glass factory and will include a hotel, restaurant, ground-floor retail space and an outdoor Zen garden, according to a news release.

The façade of the Pilkington Glass factory, a heritage building, will be incorporated into the new design by Toronto-based Teeple Architects.

"It's a really lovely building," said Stephen Teeple, the principal architect on the project. "There aren't that many pieces of art deco like it around anymore."

Teple said the plan is to incorporate subtle references to the historic building's past into the new design.



Actor Robert De Niro, left, and chef Nobu Matsuhisa attend the grand opening celebration of the world's first Nobu Hotel Restaurant and Lounge Caesars Palace on April 28, 2013 in Las Vegas, Nevada. (Ethan Miller/ GETTY IMAGES for Nobu Hotel)

There will be a copper and glass cubic volume near the entranceway that hints at the products that Pilkington shipped from its warehouses at the site.

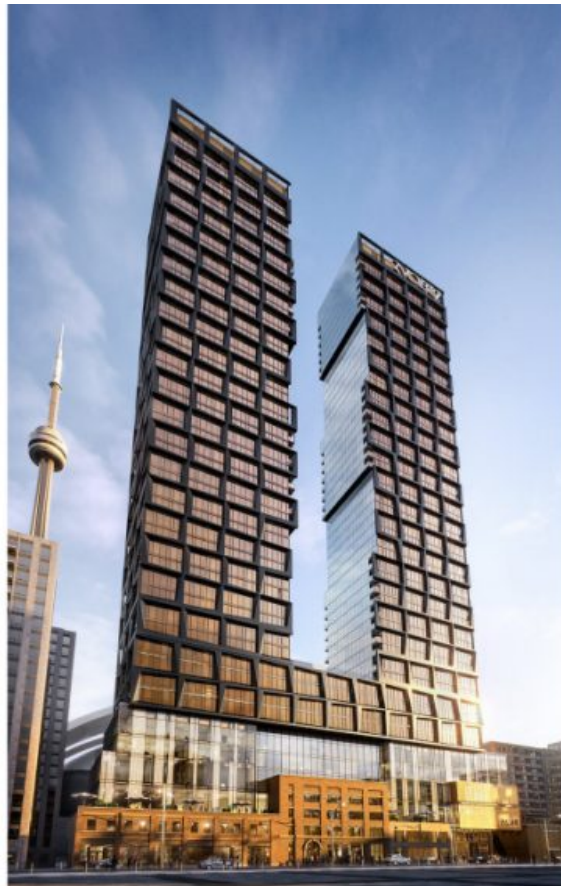
The glass towers themselves will be bronze.

Teple described it as an “essay in glass,” that pays homage to the building’s past.

The development will include 700 condo units across the two planned towers.

The hotel, itself, will sit atop the western tower, and, together with the 15,000 square-foot restaurant and the meeting spaces, will be geared towards “vibrant international customers, celebrities, tastemakers and powerbrokers,” the release said.

Nobu restaurants are known as a hot spot for an elite clientele of celebrities and other high rollers.



An artist's rendering of the Nobu Toronto hotel, restaurant and condo development planned for Mercer Street in the city's entertainment district. (Courtesy Nobu Hospitality)

A Bento Box for lunch of Matsuhisa's signature dishes will run you \$65 US at the Nobu New York location.

Teple said the idea of De Niro and his fellows frequenting a restaurant he helped design is very exciting for his firm, and for him.

"Maybe I'll get let in. too. when it opens," he joked.

"We really hope it will be an amazing landmark and a powerful addition to the Toronto skyline," he said.

The pre-construction sale for the condo spaces starts this summer.

Toronto's developer Madison Group will undertake to build the project.

The Pilkington Glass Factory stood on the site at 15 Mercer St., near King St. W. and John St., since the late 1800s. It was originally a stable built for the horses that ferried people around the city from George Verral's horse-drawn transport company.